



Visual Depth and Velocity Mapping

SpectraLink

Dustin Pierce, Matthew Mills & Bailey Lind-Trefts



Overview:

- Hardware/Software
- Design Possibilities
 - Neural net
 - OpenCV
 - Zed SDK
- Schedule



Hardware/Software

Zed Stereo Vision Camera

- Zed SDK version 2.5.1 (for Linux)

Nvidia Jetson TX2 Dev Board

- Nvidia JetPack version 3.3 (for Linux)



Neural Net

Pro

- Accurate

Con

- Complications with training



OpenCV

Pro

- Easy

Con

- Not very accurate



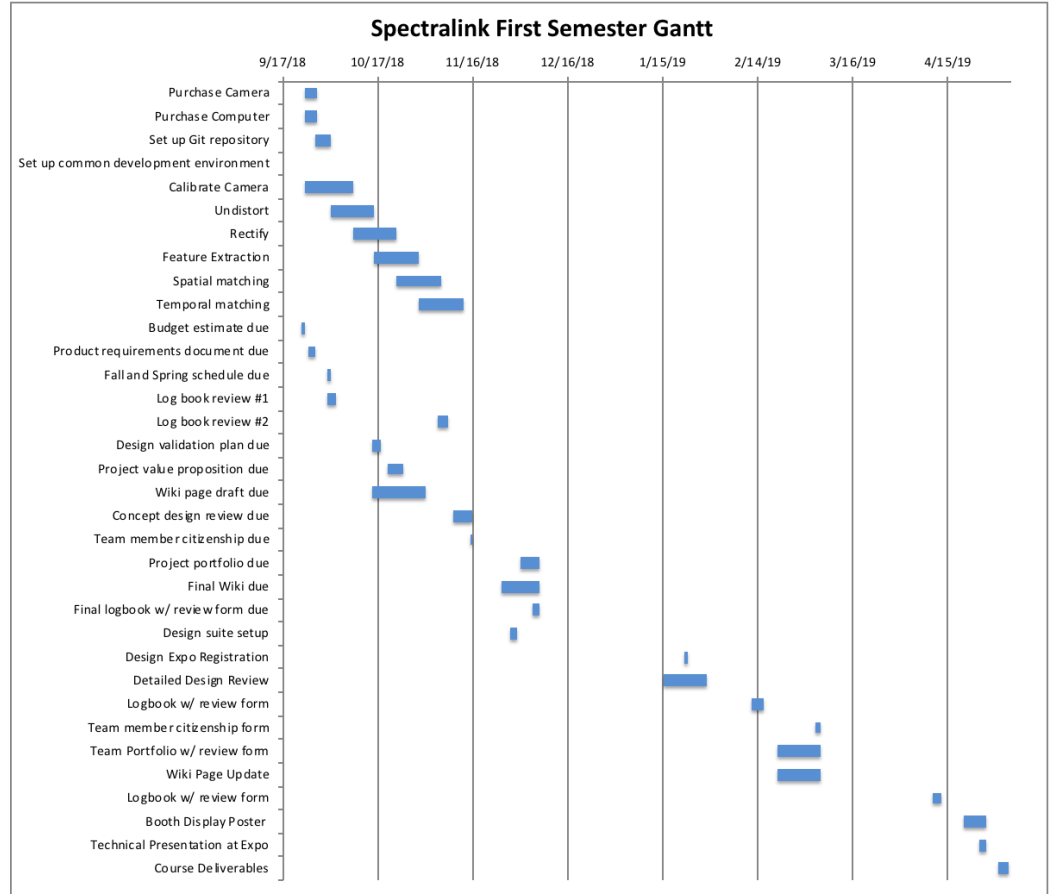
Zed

Pro

- Hardware is designed for Zed SDK

Con

Schedule





Progress